



EHS 17

Passenger lifting platform

The most adaptable lift to your needs

With travel speed up to 0,15 m/s

 **enier**[®]
elevadores



*Custom
fabrication*



*The best
quality/price ratio*



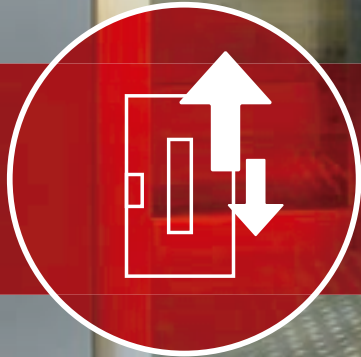
*After-sales
service*

A vertical passenger lift platform with a travel speed up to 0,15 m/s designed to give access to people to the different levels of buildings (single family homes, commercial premises, public buildings, communities, etc).

This is the most economical and practical solution to providing access to the upper floors of a building, and also to offer to passengers the maximum safety and travel comfort.

Advantages

- ➔ Designed for the elderly in mind or people with reduced mobility
- ➔ Suitable for any environment in homes or office buildings
- ➔ Cabin and structure designed according existing shaft
- ➔ Very silent and comfortable
- ➔ Low power consumption, like a household appliance, only when travelling upwards
- ➔ Maximum safety, integrates registered parachute systems
- ➔ Does not require engine room
- ➔ Minimum maintenance
- ➔ When installed in a self-supporting structure no building work is required

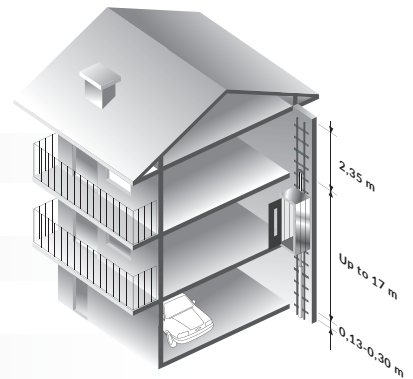


EHS 17

Passenger hydraulic lift



General features



Maximum travel height	Up to 17 m and 8 stops
Travel speed	Up to 0,15 m/s
Load capacity	Up to 500 kg
Capacity	Up to 6 passengers (according to platform dimension)
Minimum platform	520 x 600 mm (width x depth)
Maximum platform (2 m²)	1.650x1.200 mm/1.250x1.400/2.000x1.000 mm (width x depth)
Minimum pit	130/200/300 mm (flat chassis/normal/reinforced)
Minimum headroom	2.200/2.350/2.500 mm (Ceiling height on last floor)
Pushbuttons	Alarm, emergency stop, key switch
Power supply	Three-phase or Single-phase
Motor	3 CV (2,2 kW) or 4 CV (3 kW) according configuration and travel height
Relevelling system	Automatic on stops
Auxiliary battery	Permits automatic lowering and doors opening in case of power failure
Comfort	Silent pump. Progressive valves with damped start and stop Slides low friction with vibration absorption

Functioning

Hydraulic with pushing cylinder and compact drive unit, power regulation valves, pressure gauge and locking valve.

Low voltage controller, Light LEDs and informative displays for the detection of possible faults.



*Low power
consumption*



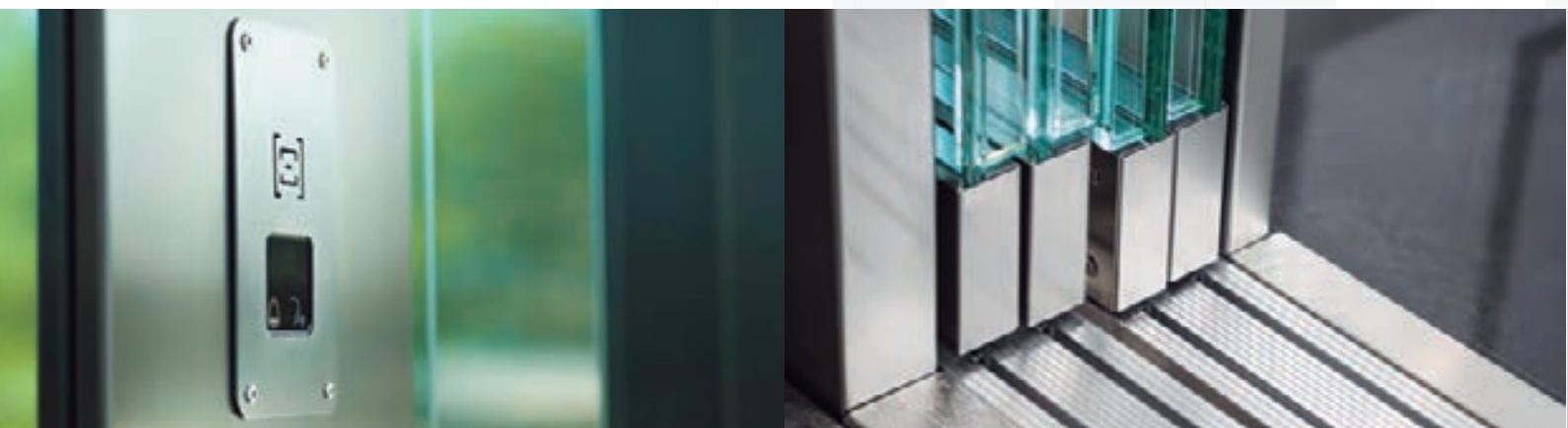
*Adaptable to any
environment*



*Silent and
comfortable*

Cabin

Access	1, 2 or 3 accesses
Access protection	Light curtain / Sensitive edges / Folding door / Telescopic door
Wall	Skinplate / Stainless steel / Melamine / Panoramic
Floor	Synthetic / Aluminium / Stainless steel / Ceramic / Specials
Ceiling	Skinplate / Stainless steel / Painted steel in RAL color
Illumination	Automatic with 4 led spotlights
Plinth	Omega profile / reinforced profile
Handrail	Aluminium / Straight stainless steel / Curved stainless steel
Communication system	Bidirectional phone / Emergency phone
Vertical operating panel	Braille pushbuttons / Emergency stop / alarm / overload indicator / key switch / identification plate / Emergency light



Safety system

- ➔ Anti-slackening cable valve
- ➔ Parachute valve with immediate action in case of breakage or hydraulic circuit leakage
- ➔ Travel safety timer
- ➔ Mechanical stop at end of journey
- ➔ Audible alarm and emergency light in cabin
- ➔ Manual valve closing hydraulic circuit
- ➔ Hydraulic valve for manual rescue
- ➔ Safety prop with active safety microswitch in the pit and on the ceiling
- ➔ Protective skirting on cabin access
- ➔ Stop pushbutton in the pit
- ➔ Manual pump to raise the cabin
- ➔ Pressure switch which stops the functioning in case of overload

Optional configuration

- ➔ Motorized arm to open semi-automatic doors
- ➔ Stainless steel panel polished finishing mirror or glass mirror
- ➔ GSM module for bidirectional communication system
- ➔ Seat in cabin
- ➔ Column operating panel in stainless steel
- ➔ Round or big size squared pushbuttons
- ➔ Display and keys on door operating panels
- ➔ Metal cabinet Enier o Schneider for electronic panel and hydraulic group
- ➔ Special cabins (on request)
- ➔ Self-supporting structure with panoramic sides, blind or perforated sheet
Minimum dimensions: 685 x 825 mm (width x depth)
- ➔ Kit adaptation elements standards EN 81-70



EHS 17 Features

Panels

→ Skinplate



Dark orient



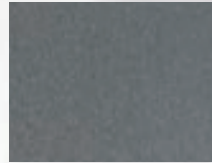
Garnet



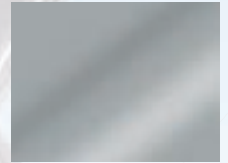
Beige



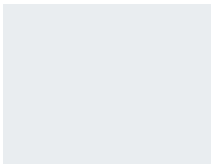
Light grey



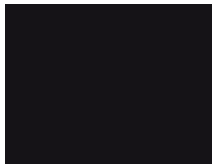
Dark grey



Stainless steel



White



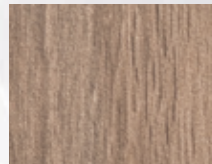
Black



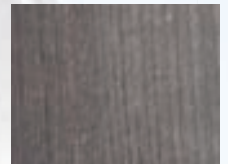
Walnut



Pomier



Roble Old



Roble Grey

→ Melamines



Haya Ega

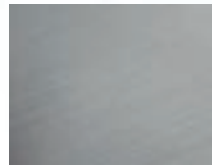


Cerezo Latino

→ Stainless steel



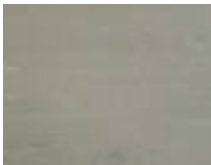
Bright stainless steel



Mat stainless steel

Floorings

→ Synthetic



Fog



Carbon

→ Metallic

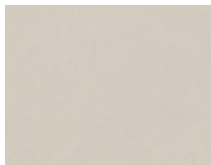


Aluminium



Stainless steel

→ Ceramics



Ivory



Iron



Graphite

→ Specials



Granit



Silestone

Accessories



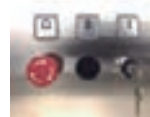
Curved handrail



Straight handrail



Phone



Cabin operating panel



Door operating panel with floors light indicator



Vertical operating panel

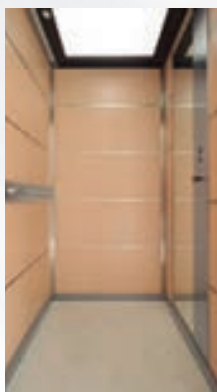
Cabins



Skinplate/Stainless steel
Dark orient
Zenit flat panel



Skinplate/Panoramic
White / Roble old / Glass
6 circular spotlights

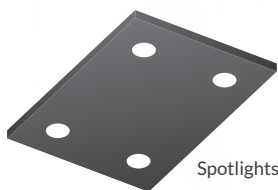


Lux
Melamine haya ega
Zenit flat panel

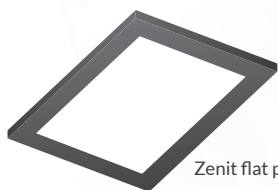


Panoramic
Stainless steel mirror / Glass
4 circular spotlights

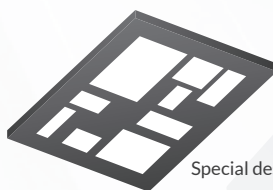
Ceilings



Spotlights



Zenit flat panel



Special design

Doors and mirrors

→ Semi-automatic



Blind



Narrow vision panel



Wide vision panel

→ Folding doors

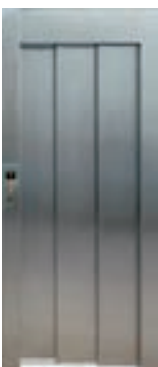


Blind



Aluminium framed
glass

→ Telescopic



Stainless steel



Framed glass



Total glass

→ Mirrors



Stainless steel panel



Half mirror



Av. França, 205
17840 Sarrià de Ter (Girona)
Tel. (+ 34) 972 171 374
enier@enier.com

www.enier.com