



*Passenger Lifting
Platform*

Travel speed up to 0.15 m.p.s

*model
EHP-05*



 **enier®**

We manufacture to satisfy your needs



A passenger lift platform with a travelling speed of up to 0,15m.p.s.; designed to give access to the different levels of buildings such as, single-family homes, commercial premises, public buildings, communities, etc. Not only is it the most economical and practical solution to providing access to the upper floors of a building, but also offers the maximum safety and travel comfort.

Advantages

- Designed for people with reduced mobility and the elderly in mind
- Increases property value
- Suitable for any environment in homes or office buildings
- The best solution to architectural barriers
- Silent and comfortable, ideal for single-family homes or villas
- Wide range of personalised possibilities to suit taste
- Lift can be designed according to space availability
- Low energy costs, no more than a household appliance. Motor works only when travelling upwards
- Can work on single phase household electricity. No special connection required
- Automatic on/off car lighting, saving energy costs
- Offers maximum safety as it incorporates an emergency gear to stop the car were it to be necessary
- Thanks to a progressive acceleration and shock absorption, comfort is increased
- Easy assembly and installation, does not require engine room
- Minimum maintenance
- If installed in a self supporting structure, no masonry work is required

General characteristics

- Maximum trajectory: up to **17 m** and **7 stops**
- Travel speed up to 0.15m.p.s.
- Rated load up to **400Kg.**
- Capacity of up to **5 passengers** depending on car floor dimensions
- Minimum car size: **700 X 625 mm** (width x depth)
- Maximum car size: **1,600 x 1,200** or **2,000 x 1,000 mm** (width x depth)
- Minimum pit depth required **100 mm or 250 mm**, according to specifications. (Building a ramp will avoid to dig a pit)
- Minimum headroom required of **2350mm** should the car have no door
- Car operating panel includes a key switch and pushbuttons for floors, emergency stop and alarm
- Mains either single phased or three phased.
- Motor power either 2.2 or 2.9 Kw., according to specifications and trajectory height
- Automatic releveling system on every floor for increased safety and comfort.
- Emergency power battery supply prevents being trapped in the car and allows for safe descent the case of power failure.

Operation

- Hydraulic drive using a ram and a compact silent pump unit, incorporating a **submerged motor reducing noise by as much as 6 dB.** Power regulation valves for descent and speed control with damped start and stop. It includes a pressure gauge and a locking valve.
- Low voltage controller with non reprogrammable electronic panel including indication LEDs and information display, allowing for the detection of possible errors or mal-function



Car

- Made to measure car with up to three access points
- Panels in skin plate, melamine, stainless steel or glass
- Reinforced drop leaf roof allowing for easy maintenance.
- Automatic on/of lighting
- Emergency light in case of power failure
- Non slip aluminium floor
- Horizontal car operating panel includes a key switch and Braille engraved pushbuttons for floors, emergency stop and alarm.
- Light curtain protects access of car if no car door is installed
- Lift entrance and trimmings in stainless steel
- Phone extension connected to home landline

Security Systems

- Safety gear capable of stopping the car in an unexpected downward emergency due to slackening or breaking of suspension ropes.
- Rupture valve acting immediately in case of breakage or hydraulic circuit leakage
- **Active safety** controller device cuts off power in the case of cable slackening
- Emergency battery powered supply prevents being trapped in the lift and provides a safe descent
- Automatic relevelevelling device keeps the car within a maximum trajectory difference of +/- 5cm. on every floor, increasing safety and comfort.
- Travel safety timer
- Mechanical stop at end of journey
- Audible alarm and emergency light
- Manual valve closing hydraulic circuit
- Manually operated emergency lowering valve
- Safety stand with **active safety** electronic switch for maintenance in the pit
- Safety elevator apron
- Stop button in pit (option)
- Manual operated pump to raise the car (option)
- Overload light indicator or buzzer (option)
- Pressure activated device prevents normal starting of the car in the event of overload (option)

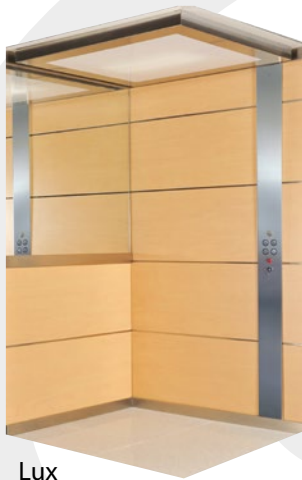
Optional configuration

- Installation of car doors:
 - Folding car door or automatic sliding telescopic car door (operation becomes automatic push button).
 - Landing doors, side hinged swing type, either blind, with narrow vision panel or with wide vision panel. Can be equipped with an arm to automatically open and close.
- Automatic sliding telescopic landing doors.
- Granite flooring, Silestone, synthetic or stainless steel
- Ceilings with a variety of designs and finishes
- Decorative mirror
- Straight, curved or rectangular rail
- Car operating panel on a full height Stainless Steel column
- Oil Heater
- Thermostat
- Oiler for guides
- Light indicator showing position of lift
- Steel cabinet to house the controller and the pump unit
- Special cabins (on request)
- Self-supporting structure with metal or glazed sides.



Passenger lifting platform

Cabins



Lux



Melamine

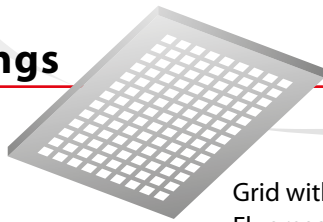


Skinplate

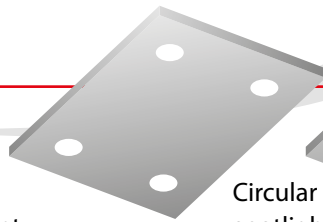


Widescreen

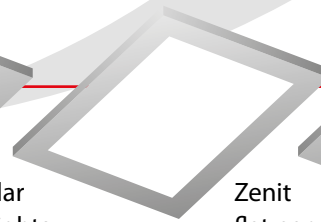
Ceilings



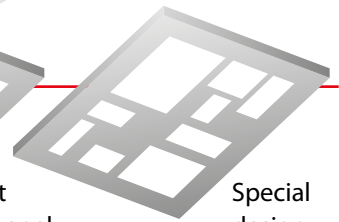
Grid with
Fluorescent



Circular
spotlights



Zenit
flat panel



Special
design

Semi-automatic doors



Blind



Narrow vision
panel



Wide vision
panel

Mirrors



Half mirror



Double mirror



3/4 Mirror

Folding doors

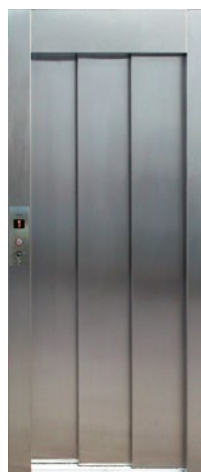


Blind



Framed glass

Telescopic doors



Stainless steel



Framed Glass

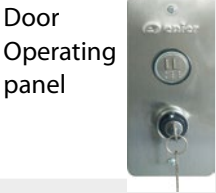


Total Glass

Accessories



Horizontal car operating panel



Door Operating panel



Phone



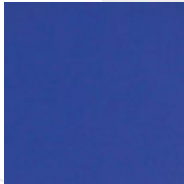
Car operating panel on a full height Stainless Steel column

Panels

Melamine



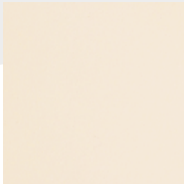
Blue Oslo



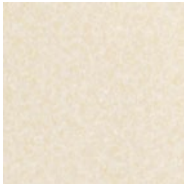
Blue Sea



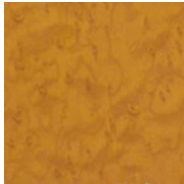
Toscan



Lin



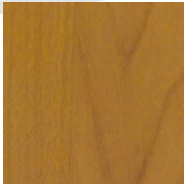
Maple L01



Cherry L03

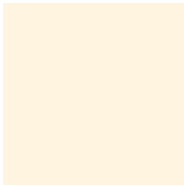


Orient Beige

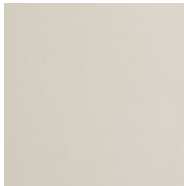


Orient Havane

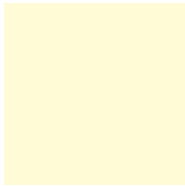
Skin plate



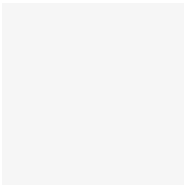
Lin



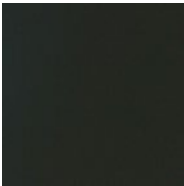
Grey



Beige



White A09



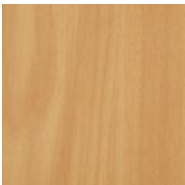
Black A09



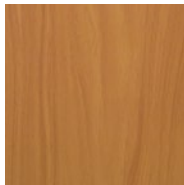
Orient Beige



Orient havane



Pomier



Walnut



Stainless

Floorings

Granite

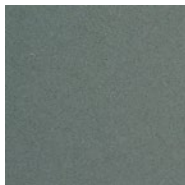


Clear granite

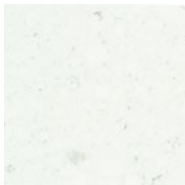


Dark granite

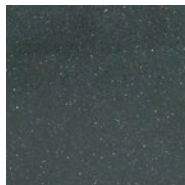
Silestone



Lead Quars

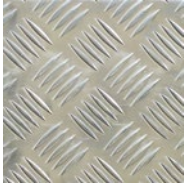


White Rivers



Black Thebes

Metal



Stainless



Aluminium

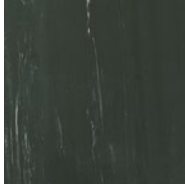
Synthetic



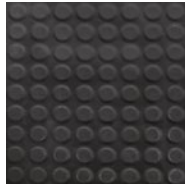
Fog



Shadow



Carbon



Dots

Passenger lifting platform



EC TYPE EXAMINATION

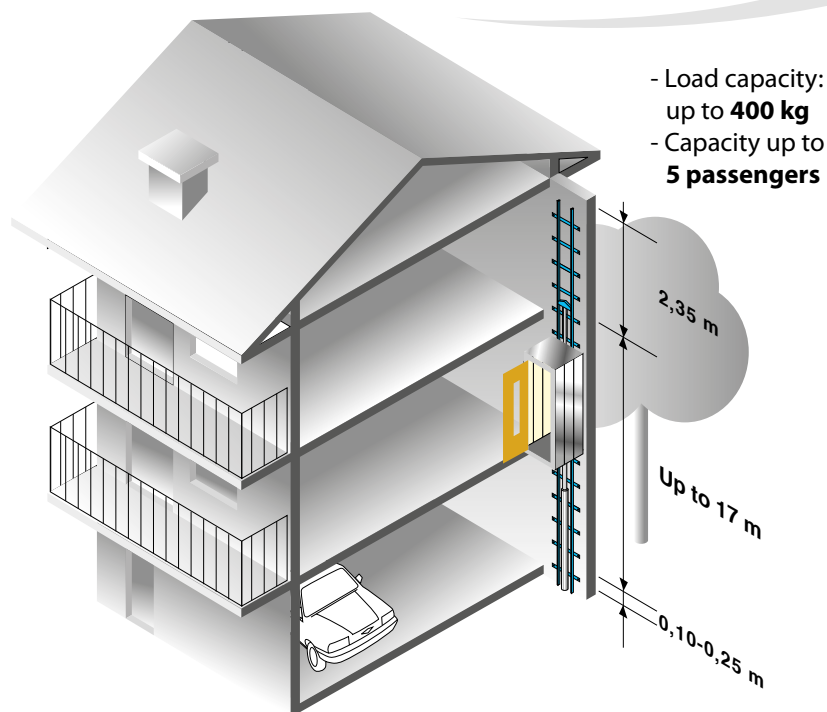
Machine directive 2006/42/EC
transcribed in the
R. D. 1644/2008
of October 10

DIRECTIVES

2004/108/CE
2006/95/CE

HARMONIZED STANDARDS

EN ISO 12100-1 EN ISO 12100-2
EN 1050
EN 294: 1992 EN 349
EN 60204-1



- Colours printed in catalogue may not be true to real colours.

- ENIER follows a policy of constant improvement and therefore reserves the right to make changes without prior notice.



Short rise platform



Very short
rise platform



Stair platform lift



Chair stair lift



Stair climber



Goods-only hoists
and platforms



enier@enier.com
www.enier.com